

Public Document Pack

Working with communities to improve the quality of life for all in Argyll and Bute

www.argyllandbutecpp.net



argyll and bute
communityplanningpartnership

Municipal Buildings Albany St, Oban, PA34 4AW

Tel: 01631 567855

Email: danielle.finlay@argyll-bute.gov.uk

4 September 2013

OBAN LORN & THE ISLES COMMUNITY PLANNING GROUP - CORRAN HALLS, OBAN on WEDNESDAY, 11 SEPTEMBER 2013 at 2:00 PM.

I refer to the above meeting and enclose herewith agenda items 4 (Core Paths as an Economic Tourism Driver), 5(g) (Third Sector Partnership), 5(h) (Community Safety Highlight/Exceptions Report), 5(i) (Broadband and Renewable Energy Projects) and 8 (Proposed Area Forums) which were marked on the agenda as “to follow” and additional item 5(j) (Highlands and Islands Enterprise), which was not included on the agenda for the above meeting.

“TO FOLLOW” & “ADDITIONAL” ITEMS

4. CORE PATHS AS AN ECONOMIC TOURISM DRIVER

Presentation by David Adams McGilp (Pages 1 - 2)

5. (g) THIRD SECTOR PARTNERSHIP

Report by Glenn Heritage (Pages 3 - 12)

(h) COMMUNITY SAFETY HIGHLIGHT/EXCEPTIONS REPORT

Report by Area Governance Officer (Pages 13 - 18)

(i) BROADBAND AND RENEWABLE ENERGY PROJECTS

Report by Moray Finch, Mull and Iona Community Trust (Pages 19 - 20)

(j) HIGHLANDS AND ISLANDS ENTERPRISE

Presentation by Ailsa Raeburn, Scottish Land Fund Advisor (Pages 21 - 46)

8. PROPOSED AREA FORUMS

Report by Community Development Officer (Pages 47 - 50)

OBAN, LORN AND THE ISLES COMMUNITY PLANNING GROUP

Contact: Danielle Finlay, Area Governance Assistant – 01631 567945

This page is intentionally left blank

Argyll & the Isles Strategic Tourism Partnership

Integration

- Private Sector
- Public Sector
- Third Sector
 - Transport
- Local Marketing Groups
- Destination Organisations
- Sector Groups
- Policy, Strategy & Operational Priority

Collaboration

- Marketing
 - Branding
- Public Relations
- Project Support
- Consumer Data
 - Customer Service

Development

- Products, Packages & Experiences
- Infrastructure
- Wildlife & the Great Outdoors
- Culture, History & Heritage
 - Marine Food & Drink Events

This page is intentionally left blank



Argyll & Bute – Third Sector Partnership

Update to OLI Area Community Planning Group

September 2013

News from the Partners

IJCVS are pleased to announce that Rhona McPhie has joined as the Manager of IJCVS replacing Lesley Anderson who left to take up a post with the East Renfrewshire Interface in August. Rhona took up post at the very end of August and will be supported by Argyll Voluntary Action as she settles in to her new post. IJCVS wish to record their thanks to Lesley for the enormous effort and improvements she brought about during her time at IJCVS and are delighted she will now be joining the board.

Argyll Voluntary Action have recently commenced their work, Building Community Bridges, a Youngstart initiative; this is an intergenerational piece of work which will link with both the youth work and Saltire as well as that undertaken through the Reshaping Care for Older People agenda.

ABSEN have completed the tendering process for the Domestic Care feasibility study on Bute and this is being undertaken by SKS CIC.

Third Sector Partnership

The TSP recently undertook a 'market test' survey to identify interest in the referendum and independence debate. This brought an interesting mix of views and although information was requested, the original thought of one large event has been changed based on feedback. We will now organise smaller local fora where issues can be put to a panel. Some local councillors have already expressed interest and willingness to participate and the focus will be based on the real issues people feel will affect them in their daily lives. Further details to be released this autumn.

Third sector support has seen a trend in rising requests for information and support enabling organisations to become, or learn about potentially becoming, SCIO's (Scottish Charitable Incorporated Organisations). Whilst not an appropriate choice for all this form works well for a large number of organisations and is clearly becoming more popular despite a sometimes fairly complex transfer process.

We have also seen a rise in the number of organisations encountering problems – either in satisfying funders (in some cases losing or risking losing funds), or internally with employment and governance issues. We are currently working with several groups on some fairly serious matters.

Health and Social Care Integration has been topic for many of the third sector fora and we have some very clear comments and feedback which are relayed to Scottish Government and through the CPP and CHP mechanisms.

There is also a process to make clearer and expand the information on Argyll Communities TSP website – this is a work in progress although comments are welcome. We hope this will make it easier to navigate the site and to find relevant information.

Nationally, we have been involved in a growing debate over the engagement and funding of national organisations over local groups who may well have the greater local knowledge and expertise. This is an ongoing dialogue and we would welcome any comments any group wish to make.

GH/ 180813



Reshaping Care for Older People

Argyll and Bute

Voices of Older People

Report



Compiled from engagement, consultations and surveys Jan – May 2013

Background

This document reflects the views, thoughts and ideas of older people collated during a range of consultations over the period from January to May 2013. Older People across the area had opportunities at various times to let us know their thoughts about the Reshaping Care for Older People agenda, Joint commissioning and Health & Social Care services.

342 people participated in reshaping care and joint commissioning discussions a further 45 gave input by surveys. This work is ongoing but as we consider the way forward it seems timely to remind ourselves what we have heard so far.

Older people were also consulted about spending priorities as part of the budget consultations and about the priorities for Joint Commissioning. This feedback is reflected here in relation to Health and Social Care budgets. This seems a useful starting point, and although the sample is smaller (89 older people) the responses are derived from across Argyll & Bute.

This report also incorporates information gathered at the 'Reducing Isolation and Loneliness' seminar in March 2013 attended by frontline staff who were mainly drawn from the third sector. The seminar provided an opportunity to pool combined knowledge, feedback and concerns and views expressed by older people to the frontline workers within their various work settings.

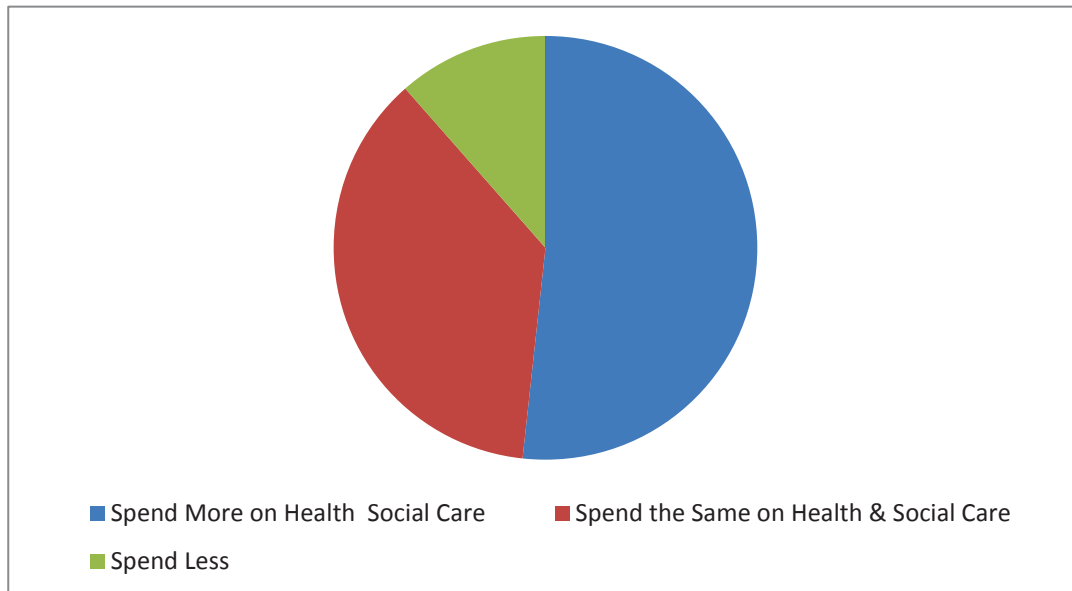
In addition, the final report from the roadshow events of 2012 is available on request. These events were attended by a range of providers from across public, independent and third sectors and members of the public. The events were held at very early stages of the reshaping care journey and are summarised separately because this report focuses on more recent work.

Views on Health and Social Care budgets



Sadly, money does not any longer grow on trees. More positively it was clear during the consultation process that this was recognised and people were aware that public funds in particular were under greater pressure than ever before and that some things had to change to ensure a fair and equitable future for everyone.

When asked what level of budget should be spent on Health & Social Care, slightly more than 52% of those asked believed more should be spent, 37% felt that budgets were likely to be sufficient and 11% were in favour of reducing budgets.



It should be noted the context for this was the 2013-14 spending budget so people were not asked to look at the longer term. Responses across all areas of Argyll and Bute demonstrated overwhelming support for directing resources to supporting the economy as the foundation upon which everything else depends.

Views on the Reshaping of Care for Older People and Joint Commissioning

This work produced a wide range of responses and comments with some common themes emerging.

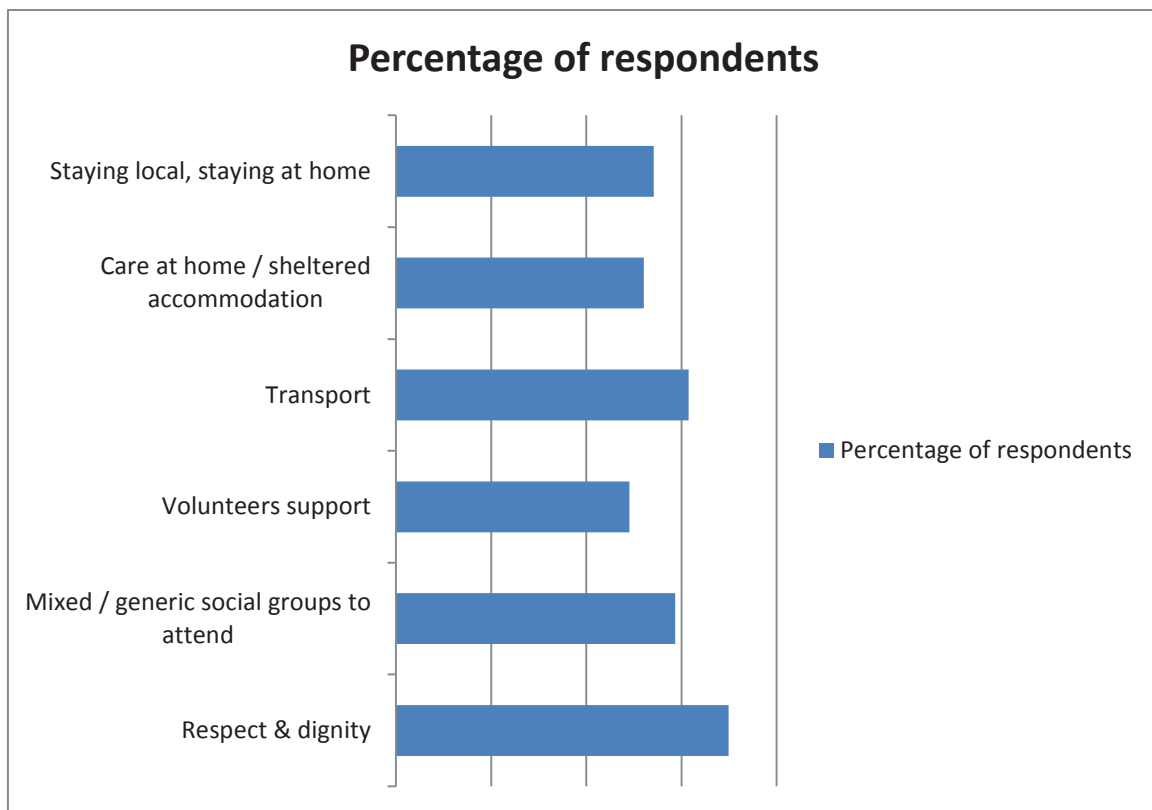
These have been divided between

What is important to you?

What are the priorities – short term and looking ahead for the next ten years?

What can be done differently or better?

What is important to you?



The top choices (those scoring over 50%) and most frequently given are as above. The highest score (69.9%) was for comments made by many around respect and dignity, including being listened to, able to have an opportunity to meet decision makers and to 'be involved'. The caveat here was about large public meetings being dominated at times by the more vocal (and not necessarily older) people and a clear feeling that there should be some effort to interact on their ground. 'Open' meetings and groups not solely for older people were important as was being part of the community for some, whilst there were

some arenas where it was pertinent to ensure older people were being heard and to meet within a group.

Transport is, unsurprisingly, an issue for most people at 61.5% citing this as a priority area and this is true across all communities and demographics. Almost every consultation will feature comments about transport, and patient and hospital transport also has a high number of respondents referring to the difficulties encountered.

The next highest score (58.7%) was about social and other groups. Generic groups allowing people to mix with their community were clearly important and where some agencies offer volunteer transport to attend this too, was appreciated. A number of people mentioned not wanting to attend groups solely for older people, wanting to be 'ordinary' and do things along with their communities rather than feeling 'a special case' or restricted to the company of older people.

Being able to live independently at home or staying local if sheltered housing or care home is needed were also important.

Care at home and sheltered housing was given a higher profile than a traditional view of care homes and quality was mentioned several times with some reports of less than good experiences. Support from volunteers from a range of third sector organisations was also valued highly often along with the provision of generic and social groups.

Looking forward – what are the priorities?

This drew a wide range of responses, and again transport featured as a need with specific mention of patient transport and the travel difficulties in particular to hospitals and appointments within Greater Glasgow and Clyde. In fact where complaints about Health services specifically arose, over 78% related to services provided by GG & C.

In summary, these are the areas which people were keen to identify and such was the mix of responses within these themes it would be inappropriate to try and place them in priority order.

Listening and Consultation
Transport and volunteer transport
Peer networks and Community supports
Carers and Carer support
Dementia support
Housing – and specifically one bed housing (models of sheltered housing)
Health and Social Care Community supports (public sector provision)

What can be done differently or better?

Many people returned to theme of being listened to – and of professionals not making up their minds before consulting with people. Having fewer Managers also seemed relevant to many people. There was criticism for community transport services which were felt to be expensive and therefore not available to those on lower incomes.

Fewer meetings was also cited as a way of saving Health and Council budgets – adopting an attitude of ‘just getting on with it, with us’.

Concerns tended to be around losing hospital beds, any reduction in community services (mostly would be AHP services – these are well regarded). People were very aware of medicines and felt less could be prescribed. They felt the third sector generally works well together and the public sector should make an effort to link up more.

Less	Change	More
<ul style="list-style-type: none"> • Medication • Meetings • Managers • Pigeonholing of older people • Reduction in hospital beds • Expenditure on cosmetic improvements • Scottish Government jargon • Segregation of services 	<ul style="list-style-type: none"> • Review of Care packages • Partnership working to be more effective • Models of community support to generic provision, open to all • Therapies / medication use alternatives • Home Care to allow longer visits • Day care and resource centres - streamline / merge 	<ul style="list-style-type: none"> • Affordable Transport • Dementia support • Carer support • Peer networks and community supports • Decision making by older people • Community nursing • Listening . consulting • Volunteers (people who want to be with us) • Risk taking

Seminar – Reducing Isolation and Loneliness

Key Findings and Messages:

What Are Older People Telling Us?

- Older people are less likely to think about themselves than about others, younger people and their future: when they did – isolation, social contact and volunteer befriending all featured
- Some people are unaccustomed to socialising, having lived with their partner – or had carer responsibilities
- Support to engage with existing facilities / activities
- The need to build up self esteem and confidence
- Community activities open to all – most agencies present do this, recognising older people do not want to be separated from community – generic services important – open to all. Carers centres open to all, ditto Dementia groups and AVA groups – model works for older people and for the community
- Islay experience – people do not want to have services specific to older people – only being with own age group is equally isolating. Need to be part of the community and enjoy the interactions eg along with grandchildren, friends of all ages
- Not all older people want ‘knitting’ and cups of tea – have range of interests and experiences to share – range of opportunities and able to choose what want to do.
- Not wanting to be pigeon holed into older people services
- Open on Saturdays and Sunday important
- Open ‘drop-ins’ for anyone are valued
- Isolation exists in ‘pockets’ not necessarily generally . In some areas so much happening older people are fully occupied – just because someone thinks something is a good idea – means it might be nice but may not be needed or used if implemented
- There are lot of services but can be difficult (*for anyone*) to find out what they are and how to get in touch – need to use the information we have
- Opening services / initiatives to all means there are no ‘labels’ and no expectation to talk about specific problems until or unless people are ready and want to do so. (experience of the groups present is very positive around this approach)

The full document and comments from frontline staff are available from

info@argyllvoluntaryaction.org.uk

Compiled May 2013 by Glenn Heritage (Third Sector Partnership, Argyll Voluntary Action) and with volunteer input and assistance.

E & O E. ©

ARGYLL AND BUTE COUNCIL**OBAN, LORN AND THE ISLES
AREA COMMUNITY PLANNING
GROUP****CUSTOMER SERVICES****11 SEPTEMBER 2013**

**OBAN, LORN AND THE ISLES COMMUNITY SAFETY FORUM – HIGHLIGHT
AND EXCEPTIONS REPORT**

1. SUMMARY

This report updates the Area Community Planning Group (ACPG) about the items discussed at the most recent meeting of the Oban, Lorn and the Isles Community Safety Forum (OLICSF) held on 26 August 2013.

2. RECOMMENDATIONS

- 2.1 That the ACPG note the work undertaken and consider whether there are any items of business which the Group may wish the OLICSF might progress on their behalf.

3. DETAIL

- 3.1 The OLICSF met on 26 August 2013 when representatives of Police Scotland, Scotland Fire and Rescue, LochWatch and Council Service Representatives were in attendance.
- 3.2 The highlight/exception report from this group together with detail of the work undertaken by Partners is attached at Appendix 1 although is not an exhaustive listing of the work of the Group. Agenda and Minutes can be located on the Council's website via this link <http://www.argyll-bute.gov.uk/moderngov/ieListMeetings.aspx?CId=419&Year=0>

4. CONCLUSION

- 4.1 The attached Appendix details the issues which were considered and discussed at the meeting on 26 August 2013.

5. IMPLICATIONS

Policy -	Accords with the SOA and Community Plan
Financial -	None
Legal -	None
HR -	None

Equalities -	None
Risk -	None
Customer	None
Service -	

**Executive Director of Customer Services
2 September 2013**

For further information contact: Melissa Stewart, Area Governance Officer,
Kilmory, Lochgilphead (01546 604331)

Oban, Lorn and the Isles Community Safety Forum Exception Report

Theme	Community Safety Outcome'	Issue and Actions	Comment	Outcomes/ Indicators
<p>Personal and Home Safety <i>Considers the safety of the individual in areas such as accident prevention, online safety, fire safety, home security, bogus and scam callers</i></p>	<p>No Cold Calling</p>	<p>Community councils were contacted with the information to take forward the “no cold calling” initiative on behalf of their communities. The Area Governance Officer had been in touch with CCs to establish whether this had been progressed but the majority of respondents had advised that this was not a particular concern for their community.</p>	<p>In effort to reduce instances of uninvited salespersons etc, individual properties or collectively agreed zones can be established to prohibit cold calling. There are also benefits in terms of deterring burglaries, bogus workers and scam callers.</p>	<p>Reduces number of crimes which have been linked to cold calling</p>
<p>Travel Safety <i>Includes issues that and individuals may encounter such as pedestrian safety, road traffic accidents, water safety, public transport safety</i></p>	<p>Speed Limits Oban/Connel back road</p>	<p>This area is a 60 mph zone and there has been recent representation that this limit should be lowered. Action – Accident Stats requested from Police Scotland and Scotland Fire and Rescue, views also sought from Connel, Oban and Kilmore Community Councils.</p>	<p>It has been reported that this road does not meet national guidelines to allow a lower speed limit to be applied. CSF wish to further explore accident figures and views of the community before determining course of action to be taken.</p>	

	Water Safety	Improved signage now on display and water safety leaflet for the 2014 season is in the process being drafted. In addition, a water safety boat has been procured and will be launched during the month of September.	The water safety boat will be located on the loch to promote the safe use of the Loch and will be operational during weekends and bank holidays when it can be on hand to assist with any rescue efforts.	Reduce number of incidents on Loch Awe
	Parking at Dunollie	It was noted that parking at Dunollie could cause problems for access and egress of emergency service vehicles and Strathclyde Fire and Rescue were asked to take this matter forward.	Previous problems with parking have been rectified by targeted leaflet drops by Strathclyde Fire and Rescue.	
Safety of Vulnerable Groups <i>Deals with issues in relation to individuals or groups who may be vulnerable including elderly people, young children, victims of hate crime and sexual Violence</i>				

<p>Environment Safety</p>				
<p><i>Environment safety concerns the aesthetics of communities and neighbourhoods and includes vandalism and criminal damage, graffiti, fly tipping, littering, dog fouling and secondary fires</i></p>	<p>Vandalism at Dunbeg</p> <p>Wild Camping</p>	<p>There has been a recent increase in vandalism cases at Dunbeg which Police Scotland reported on Action – it being noted that other than 2 cases, there did not appear to be a link between the crimes and therefore the CSF were content with the action taken by Police Scotland to address the matter</p> <p>Issues have arisen from a growing popularity for ‘wild camping’ which have led to a Memorandum of Understanding being prepared by the Access Team. This Memorandum gives greater clarity as to what does and what does not define wild camping and what legislative powers the Police have in terms of enforcement.</p>	<p>It was agreed to seek clarification from community councils as to whether all popular sites had been identified for the OLI area in the Memorandum of Understanding</p>	
<p>Public Space Safety</p>				
<p><i>This deals with people’s safety in their communities and public perception of safety including anti social</i></p>				

<i>behaviour, public disorder and violence.</i>				
---	--	--	--	--

Community Broadband Scotland

For communities with limited or no broadband



Context

Superfast or next generation broadband (NGB) will transform economic and social opportunities available to communities in remote areas as well as helping to reduce our carbon footprint. It will enable the delivery of public services, open up online learning opportunities, support remote and home working possibilities as well as enabling people to download music or catch up on missed TV programmes.

Currently many rural communities are unable to get the broadband coverage or speeds they need to fully benefit from being online. Community Broadband Scotland (CBS) is here to help communities receiving speeds of less than 2 Mbps to take forward their own projects to improve local broadband provision.

Why a community solution?

Commercial providers will not provide next generation broadband services to everyone. In Scotland broadband deployment is particularly challenging.

Scotland's Digital Future sets out how Scottish Government will deliver a step change in broadband speeds, paving the way for delivery of world-class, future proofed infrastructure across all of Scotland by 2020. To this end £240 million of public funds has been committed to the Step Change¹ programme to provide infrastructure with the capacity to deliver next generation broadband to at least 85% of homes and businesses and an aspiration to provide a minimum of 2 Mbps for everyone.

CBS has been set up to help communities in the 15% 'harder to reach' areas that will not benefit directly from the Step Change¹ programme. It will support communities to close this gap by developing their own broadband projects. There are many examples of communities in Scotland who are doing just this. They have demonstrated that the technology is available to develop high-speed local networks.

Community Broadband Scotland – an overview

CBS is a £5 million initiative which works to encourage and support the development of successful and sustainable community broadband projects, capable of delivering next generation speeds, through the use of established technologies and business models.

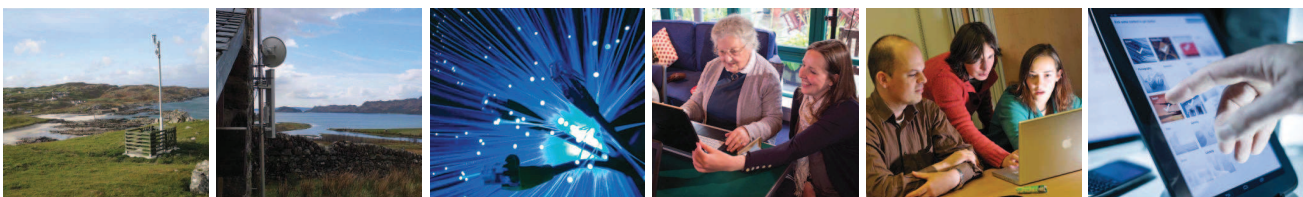
CBS works with Scottish communities that receive speeds of less than 2 Mbps and are least likely to benefit from a next generation solution under the Step Change programme.

CBS provides:

- an informative website providing resources, templates and case studies
www.communitybroadbandscotland.org
- a telephone helpline - 0800 917 3688
- a network of on-the-ground CBS advisers
- a Start Up Fund

Contact details

www.communitybroadbandscotland.org info@communitybroadbandscotland.org ☎ 0800 917 3688



¹ Step Change is part of the Scottish Government's Infrastructure Action Plan to provide infrastructure in those areas that the market will currently not go, see <http://www.scotland.gov.uk/Topics/Economy/digital> for more information

This page is intentionally left blank

Highlands and Islands Enterprise

Community Assets Team

Supporting communities to acquire and manage sustainable assets

What is Community Land Ownership?

- **Community has control** over land & land assets
 - woodlands
 - buildings & development land
 - water resources
 - minerals and sporting rights
- Land managed for **community benefit**
(employment, infrastructure, housing, tourism, amenity, social development, etc)
- The **key principles** are:
 - Open membership
 - Community support, benefit & control
 - Non-profit distributing



Some statistics

- Communities in Scotland own more land than the total owned by the National Trust for Scotland, John Muir Trust, and the RSPB
- More than 420,000 acres (169,967ha) is in community ownership
- In the Outer Hebrides, over 50% total land is in community ownership and more than 1/3 inhabitants live on community owned land



Scottish Land Fund

Ionmhas Fearainn Na H-Alba



Background

- Funding from Scottish Government
- Delivered by HIE in partnership with BIG Fund
- £9m over 4 years
- First round (to 2006) very successful











Aim of the new Scottish Land Fund

Supporting **rural communities** to become more resilient and sustainable through the **ownership and management** of land and land assets

Types of project supported

- Acquisition of **land** or **land assets** which can contribute to the overall sustainability of a community or enable retention/provision of key local services
- **Resources associated with the land**
 - mineral or riparian rights
 - buildings
 - standing timber
 - energy opportunities

Project ideas

- Land for affordable housing
- Land for amenity space
- Land for renewables projects
- Strategic assets – shops, fuel stations, hotels/ pubs: subject to no displacement
- Tourism and heritage development

Outcomes

Increased and Sustainable

- Economic
- Social
- Environmental

Development

Other outcomes

- Rural communities more empowered
- Greater capacity to control own development
- Increased opportunities to participate in community led development
- Increased opportunities to participate in volunteering
- Projects deliver community led essential local services
- Projects allow communities to generate sustainable income
- Rural communities become more resilient

Typical features of a resilient community

- Wider range of employment opportunities
- Reduced reliance on fossil fuels
- Stronger social networks
- Better access to local housing
- Greater diversity in use of land
- More local food
- Better links with other communities
- More confidence that the community will survive

Capital funding

- Between £10,000 - £750,000
- SLF can fund up to 95% of the cost, including legal and other professional fees
- Single stage application process
- Capable of quick response if properties on open market

Revenue funding

- Up to £50,000 available over 2 years
- To fund:

Planning and feasibility costs

Detailed engineering costs

Short term revenue costs

Project Officer/ Development worker

Community events and engagement

Who can apply?

Organisation criteria:

Community led/controlled

Social purpose

Open membership

Non-profit distributing

Application process

1. Phone or email BIG
2. Eligible projects referred to HIE
3. Project/application development
4. Complete & submit application
5. Assessment
6. Application awarded or rejected
7. Final deadline for submissions – Nov 2015

Other HIE support

- Pre acquisition:
- Post acquisition

HIE support – pre acquisition

- Community Assets Team can support groups with Feasibility Studies, professional and technical fees, valuations and project development
- Aim – to develop robust sustainable and fundable projects that meet displacement and State Aid requirements

HIE support – post acquisition

- Available to groups with plans for growth
- Account management of social enterprises and communities

Getting started

SCOTTISH LAND FUND

Read the guidance on the BIG website:

<http://www.biglotteryfund.org.uk/scottishlandfund>

Call on **0300 123 7110** for initial advice and a referral

HIE

Contact the Community Assets Team – **01546 605419**

Scottish Land Fund

Ionmhas Fearainn Na H-Alba



This page is intentionally left blank

**Argyll and Bute Community Planning
Partnership**

**Oban, Lorn and the Isles
Community Planning Group**



11 September 2013

Area Forum Events 2013

1.0 SUMMARY

- 1.1 This report considers the decision by the Community Planning Partnership on 22 August 2012 to hold four Area Forum events to enable consultation and feedback on the SOA 2013-23.
- 1.2 A steering group of Oban, Lorn and the Isles CPG has met and drawn up initial proposals, to ensure feedback from the area on depopulation and regeneration issues.

2.0 RECOMMENDATIONS

- 2.1 The Area CPG agrees to encourage participation in this consultation process as below.
- 2.2 The Area CPG steering group, established to consider and plan the Area Forum event, is delegated to further consider the format of the event(s) and appropriate questions for the area.
- 2.3 The Area CPG identifies partners to facilitate and record at workshop/discussion groups, and agrees dates.
- 2.4 The Area CPG agrees to consider ways of progressing ideas that come forward from the event to ensure people feel they have been able to actively contribute to community planning.

3.0 DETAIL

- 3.1 The Third Sector and Communities CPP Strategic Group has made recommendations on the format of these events, which have been considered by steering groups in the CPG areas.
- 3.2 The theme and format agreed for the events in the other three CPG areas is:

- a) **Title: “Oban, Lorn and the Isles - A Good Place to Live, Work, and Play?”**
 - b) **Overarching question to be addressed:** What needs to change to attract and retain more people (especially young people and families) to live in Oban, Lorn and the Isles?
This fits with the overarching outcome of the new SOA 2013-23, ‘Argyll and Bute’s economic success is built on a growing population’. Population levels in Argyll and Bute decreased by 3.4% whereas in Oban, Lorn and the Isles the population increased by 6.8% in the 10 years between 2001-11. The demographics have however changed in this area and the increase has not been consistent across all parts.
 - c) **Format of event:** One day (afternoon and evening) consisting of a half day with workshops/discussion groups, followed by voting on a short series of strategic and local questions using powerpoint voting. This would be followed by a public debate to consider the key questions (identified from the earlier session), followed by powerpoint voting.
 - d) **Questions to be asked:** Some of the questions asked would be asked in all four areas to allow comparisons to be made across Argyll and Bute. Other questions will relate specifically to the local areas and will be agreed by the CPG steering groups/CPGs as appropriate. The responses should be able to feed into the SOA’s key outcome of addressing the problem of de-population in Argyll and Bute.
- 3.3 In addition to the one Area Forum event, it is proposed that:
- a. The powerpoint voting is used at other events in the area, particularly those areas which may be unable to be represented at the events eg islanders. Results can be merged to make comparisons across Argyll and Bute, as well as be broken down within areas.
 - b. An electronic survey is carried out to enable those who do not attend an event to respond to the same questions.
- 3.4 For Oban, Lorn and Isles, the CPG is asked to consider the above, alongside proposals from the steering group:
- a. Consider a date week beginning 28 October for the main consultation and debate event in Oban. Proposed venue is Corran Halls.
 - b. Outreach activity to engage with people through the Winter Festival
 - c. Seek agreement from partners to set up a half day event, or ‘piggy-back’ onto an existing event, on Mull, Coll and Tiree at which the same questions may be posed; or host an inter-island discussion.

4.0 CONCLUSION

- 4.1 The Area Forums will seek views on the new SOA 2012-23, in particular in relation to the overarching issue of de-population and regeneration.

5.0 IMPLICATIONS

- 5.1 Policy: None
- 5.2 Financial: Within grant allocation from Education Scotland.
- 5.3 Legal: None
- 5.4 HR: None
- 5.5 Equalities: None
- 5.6 Risk: Poor attendance or uptake of survey
- 5.7 Customer Service: None

6.0 APPENDICES

- 6.1 Draft programme

Margaret Fyfe
Community Development Manager
6 August 2013

For further information contact: Laura Macdonald, Community Development Officer. Tel No 01631 567944

Appendix 1

**Area Consultations
Draft programme**

“(Area Name) – A good place to live, work and play?”

1. Introductions
(approx. 15 minutes)
2. Workshops on local area topics
(e.g 3 x 20 minutes = 60 minutes)
3. Power Point Voting – *questions set beforehand on core topics by Third Sector and Communities CPP Group; and area topics chosen by steering group of CPG and approved by CPG*
(approx. 30 minutes)
- BREAK** with opportunity to view “Marketplace” – *Additional people can join for debate only*
(approx. 60 minutes)
4. Introduction to debate and introduction of panel
(approx. 20 minutes)
5. Debate in style of “Question Time” - *with panel of CPP partners chaired by a strategic CPP partners*
(60 minutes)
6. Power Point Voting – a selection of questions, including some focussing on the debate issues
(30 minutes)
7. Evaluation